

THEIR PROTECTION
YOUR ASSURANCE



*Look inside for the latest treatment efficacy research
& find out how your protocol performs in the real world.*

How does your waterline treatment measure up?



Questions?

Learn more at www.ProEdgeDental.com or call our waterline safety team at 888.843.3343.

Item #	BluTab®	Price
BT50	Box of 50 BluTab Tablets 700-750mL Bottles	\$37.50
BT20	Box of 50 BluTab Tablets 2 Liter Bottles	\$57.00

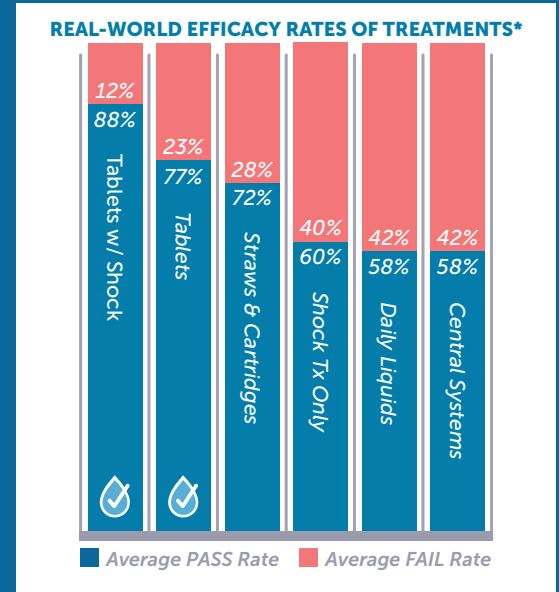


BluTab. Because it works.

Treatments are failing you 31% of the time!

Dental Industry's Largest Treatment Efficacy Study

On average, 31% of treated waterlines fail to meet the CDC standard for safe water (≤ 500 CFU/mL). Regardless of a treatment's promise, unless it performs in the real world, what's the point? Make sure your practice is using a waterline maintenance protocol backed by science and proven in practice.






Get a FREE month's supply of BluTab. Because it works.

Trusted by top dental professionals over 15,000 times every day.



At ProEdge, we're not bashful about making products that work. It's not enough for us to prove it in a lab long before it gets to your dental unit. We want our products to help take waterline maintenance off your worry list without breaking the bank. That's BluTab®.

-  **2-Time Townie Choice Award Winner**
-  **Exceed CDC Standard by 50x**
-  **Simply Add 1 Tablet at Each Refill**

BluTab® is specially formulated to be continuously present in your waterlines to keep them clean so your patients and practice are safe.



Visit ProEdgeDental.com/FreeBluTab to request a FREE month's supply!

*Data collected from 22196 consecutive waterline tests (R2A, heterotrophic plate count tests) conducted in 2017 by ProEdge Dental Water Labs. All product types provided by dental offices. Averages may not reflect your test results. All Pass/Fail measured against CDC's ≤ 500 CFU/ml standard. Study cited in "Treating & Monitoring Dental Water", Compendium of Continuing Education in Dentistry, by Nancy Dewhirst, RDH, BS & John A. Molinari, PhD. ©ProEdge Dental 12.2018_V5